

LUST™

—hair tools—

LUXURY CERAMIC hair brushes

- The LUST ROUND CERAMIC HAIR BRUSHES are the perfect styling tool for creating gorgeous waves, curls or to straighten your hair.
- Designed to retain heat for a faster blow-dry, this versatile ceramic-barrelled brush helps to deliver VOLUME and BODY to hair during styling.
- This unique hair brush helps PREVENT STATIC and SPEEDS UP DRY TIME. Specially designed bristles make for a SILKY, SMOOTH FINISH.
- The ergonomic handle gives COMFORT and ease of use.
- The unique design ELIMINATES HAIR CATCHING and PULLING.
- The structured ionic nylon bristles help REDUCE FRIZZ and ADD SHINE.
- Great for all hair types.

PRODUCT FEATURES

Hollow, vented
ceramic barrel

Heat-resistant

Soft touch, non slip
finish handle

Ionic textured
nylon bristles

Ergonomic handle

Lightweight

Specifically designed
for Hair Stylist's



25MM

CODE: LBC25



33MM

CODE: LBC33



43MM

CODE: LBC43



53MM

CODE: LBC53



65MM

CODE: LBC65

PRODUCT FEATURES

Mixed natural boar bristles & nylon

Ergonomic handle

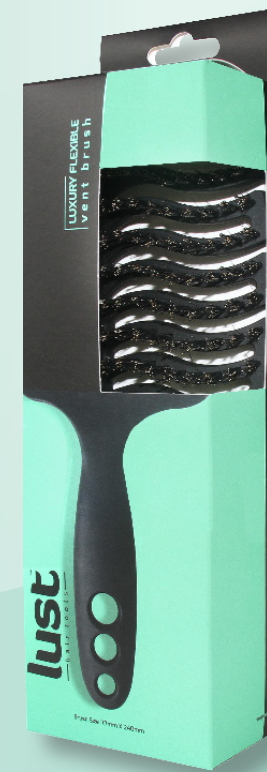
Lightweight

Soft touch, non slip finish handle

Specifically designed for Hair Stylist's

LUXURY FLEXIBLE vent brush

- The LUST LUXURY FLEXIBLE VENT BRUSH is designed with a unique flexible, ergonomically curved shape, which provides the scalp greater COMFORT while brushing.
- The mixture of boar and nylon bristles makes it perfect for DETANGLING KNOTS and PREVENTING BREAKAGE, while still distributing your hair's natural oils for a SHINY, SMOOTH appearance.
- You can use it on both wet and dry hair. The large vent allows GREATER AIR FLOW, REDUCING DRYING TIME. Perfect for all hair types.



FLEXIBLE VENT

CODE: LBFLEX



LUXURY PADDLE hair brush

- The LUST LUXURY PADDLE has a mixture of boar and nylon bristles which makes it perfect for DETANGLING KNOTS and PREVENTING BREAKAGE while still distributing your hair's natural oils for a SHINY, SMOOTH appearance.
- You can use it on both wet and dry hair.
- Great for all hair types.

PRODUCT FEATURES

Mixed natural boar bristles & nylon

Lightweight

Soft touch, non-slip finish handle

Ergonomic handle

Specifically designed for Hair Stylist's

PADDLE

CODE: LBPAD

PRODUCT FEATURES

100% Natural
boar bristles

Ergonomic handle

Lightweight

Soft touch, non slip
finish handle

Perfect size
for travel

LUXURY MINI cushion brush

- The LUST LUXURY MINI CUSHION BRUSH is your perfect TRAVEL COMPANION!
- The boar bristles make it perfect for DETANGLING KNOTS and PREVENTING BREAKAGE, while still distributing your hair's natural oils for a SHINY, SMOOTH appearance.
- You can use it on both wet and dry hair. Great for all hair types.



MINI CUSHION

CODE: LBMIN



LUXURY TEASING brush

- The LUST LUXURY TEASING BRUSH gets every last hair with its staggered bristles. The mix of long and short bristles provide BETTER TRACTION than a traditional teasing brush, meaning you get MORE VOLUME with fewer passes through the hair, thus LESS BREAKAGE.
- The high-quality of the natural boar bristle is gentle on hair and extensions, evenly distributing product and your natural oils. The narrow head provides PRECISION and CONTROL for refining everyday styles.
- The Lust Luxury Teasing Brush is great for up-dos, artistic styling and everyday styling.
- Great for all hair types.

PRODUCT FEATURES

100% Natural
boar bristles

Ergonomic handle

Lightweight

Soft touch, non slip
finish handle

Specifically designed
for Hair Stylist's

Mixed size bristles

More tease in
less time!

TEASING

CODE: LBTEA